

Oficinas  
**Reforma 93**



**JYSA**  
GRUPO INMOBILIARIO

A photograph of a modern building facade featuring a large glass curtain wall reflecting the sky and surrounding trees. The ground floor has a stone-clad entrance with glass doors. A large tree trunk is visible on the left side of the frame.

## Características

- Pisos 17
- Altura de 2.70 metros
- 4 elevadores para 12 personas
- Estacionamiento
- Uso de suelo oficinas



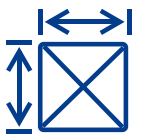
## Metraje



Terreno  
**482.00 m<sup>2</sup>**



Construcción  
**20,783.51 m<sup>2</sup>**



Área Disponible  
**9,170.00 m<sup>2</sup>**



Small informational sign on the left wall, possibly a QR code or safety notice.



Large informational sign on the back wall, featuring text and graphics, possibly a safety or emergency procedure poster.









REFORMA





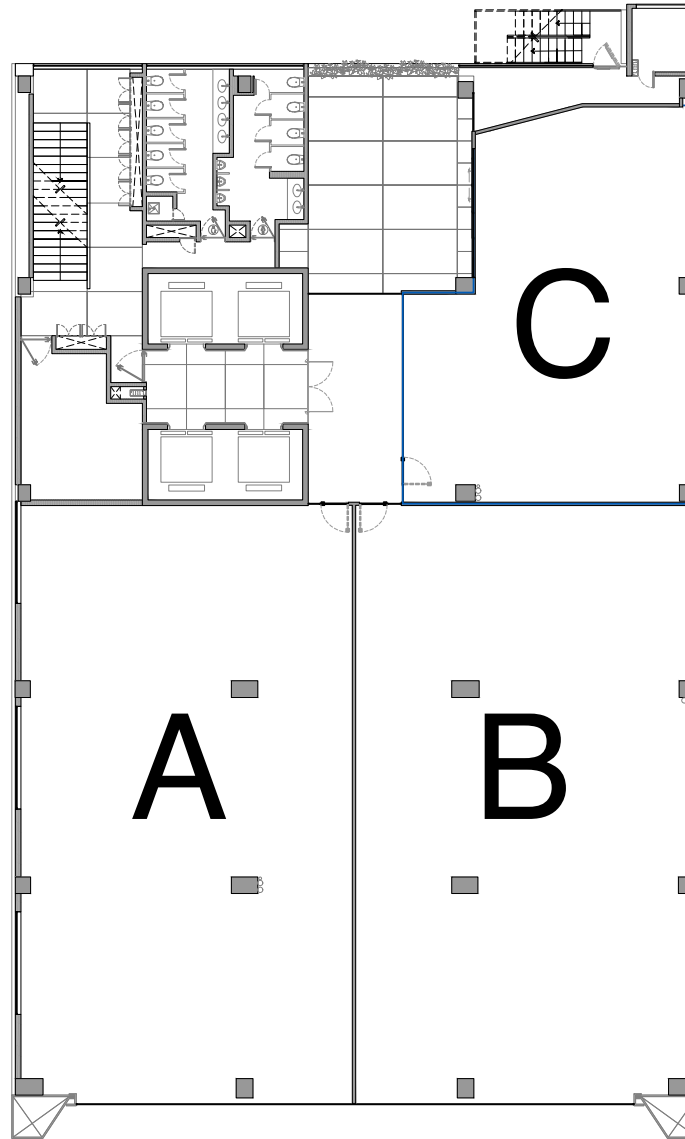
EXIT





# Planos

Nivel 4  
Nivel 10  
Nivel 14  
Nivel 16



A = 367 m  
B = 367 m  
C = 183 m



**JYSA**  
GRUPO INMOBILIARIO