

Corporativo  
**Santa Fe**



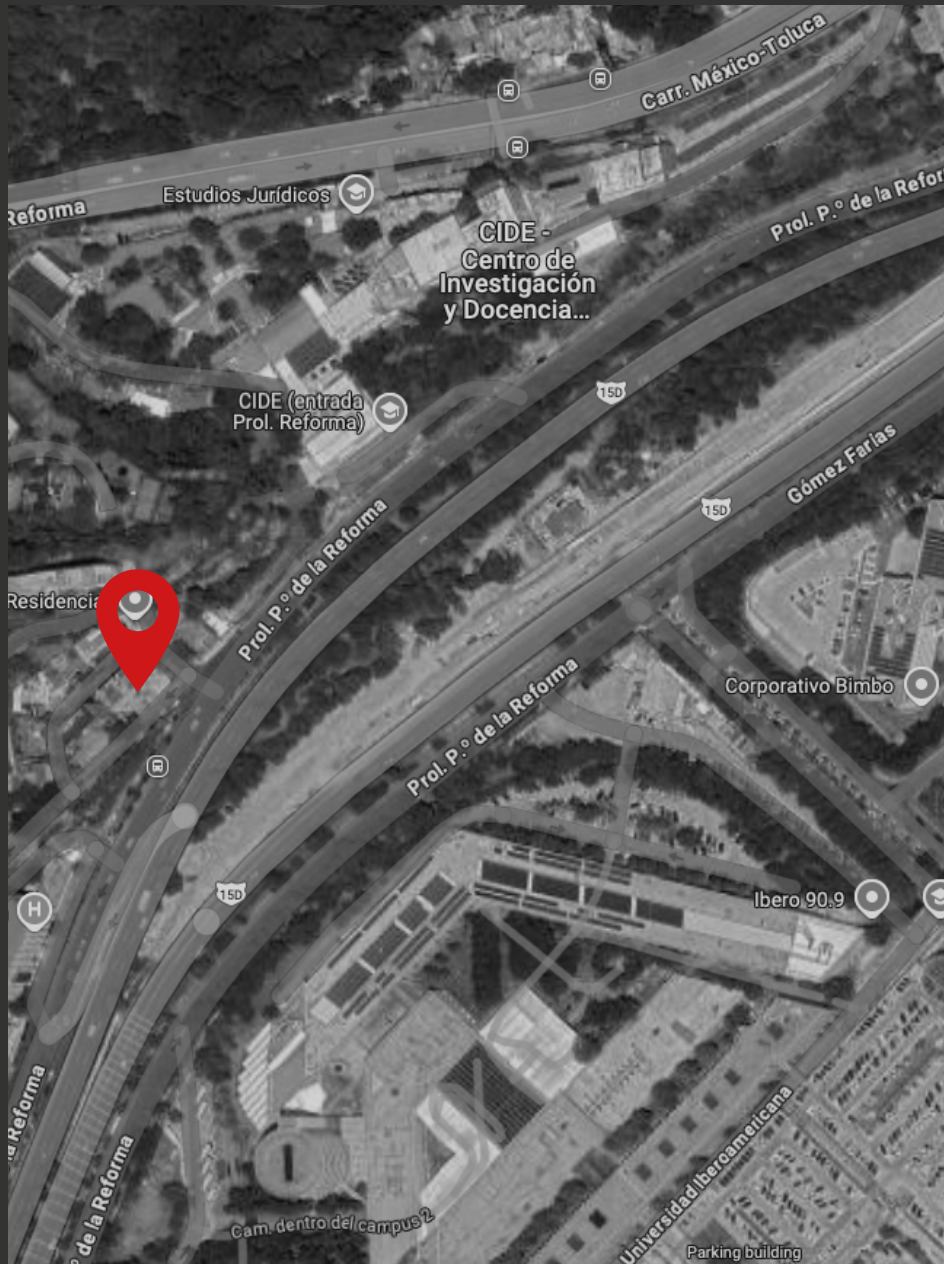
**JYSA**  
GRUPO INMOBILIARIO

An aerial photograph of a city street. The street is paved and has several cars parked along the side. On the left, there are modern buildings, including one with a glass facade and another with a sign that says 'HOSPITAL'. On the right, there are older, multi-story buildings, some with balconies. The street is lined with trees, and there are utility poles and wires visible. In the background, more buildings and a hillside with trees are visible under a cloudy sky.

## Características

- Pisos 8
- Altura de 2.60 metros
- Elevador para 6 personas
- Estacionamiento
- Uso de suelo oficinas

## Ventajas de la ubicación



Colonia: **Paseo de las Lomas**  
Alcaldía: **Álvaro Obregón**

Vías cercanas:

- **Autopista, México - Marquesa**
- **Prol. Paseo de la Reforma**
- **Gómez Farias**
- **Joaquín Gallo**
- **Vasco de Quiroga**



Ernest J. Piper 9, Santa Fe, Paseo de las Lomas,  
Álvaro Obregón, 01330 Ciudad de México, CDMX



5292 1789

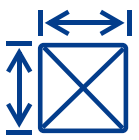
# Metraje



Terreno  
**574.00 m<sup>2</sup>**



Construcción  
**2,365.00 m<sup>2</sup>**



Área Disponible  
**1,800.00 m<sup>2</sup>**















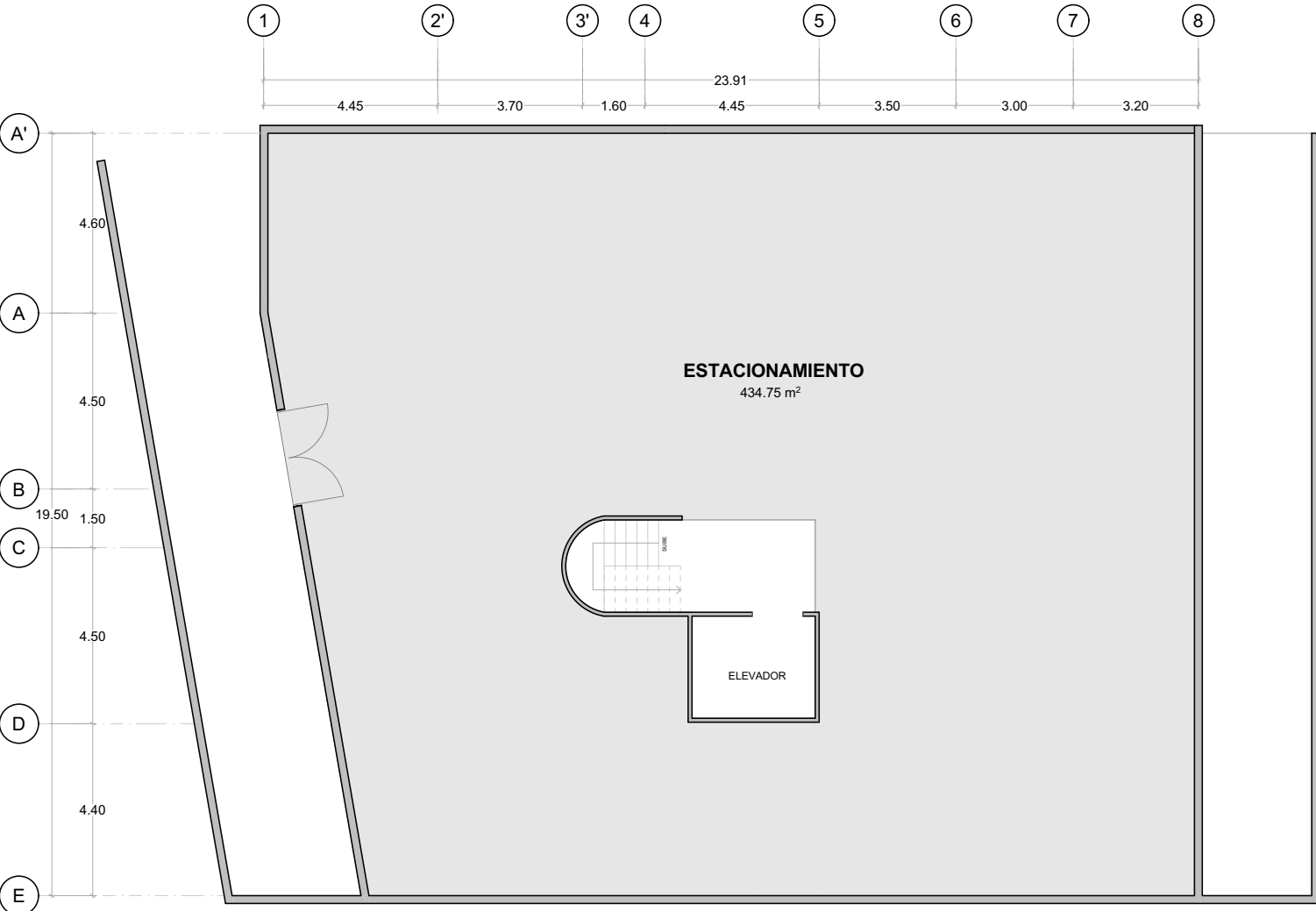




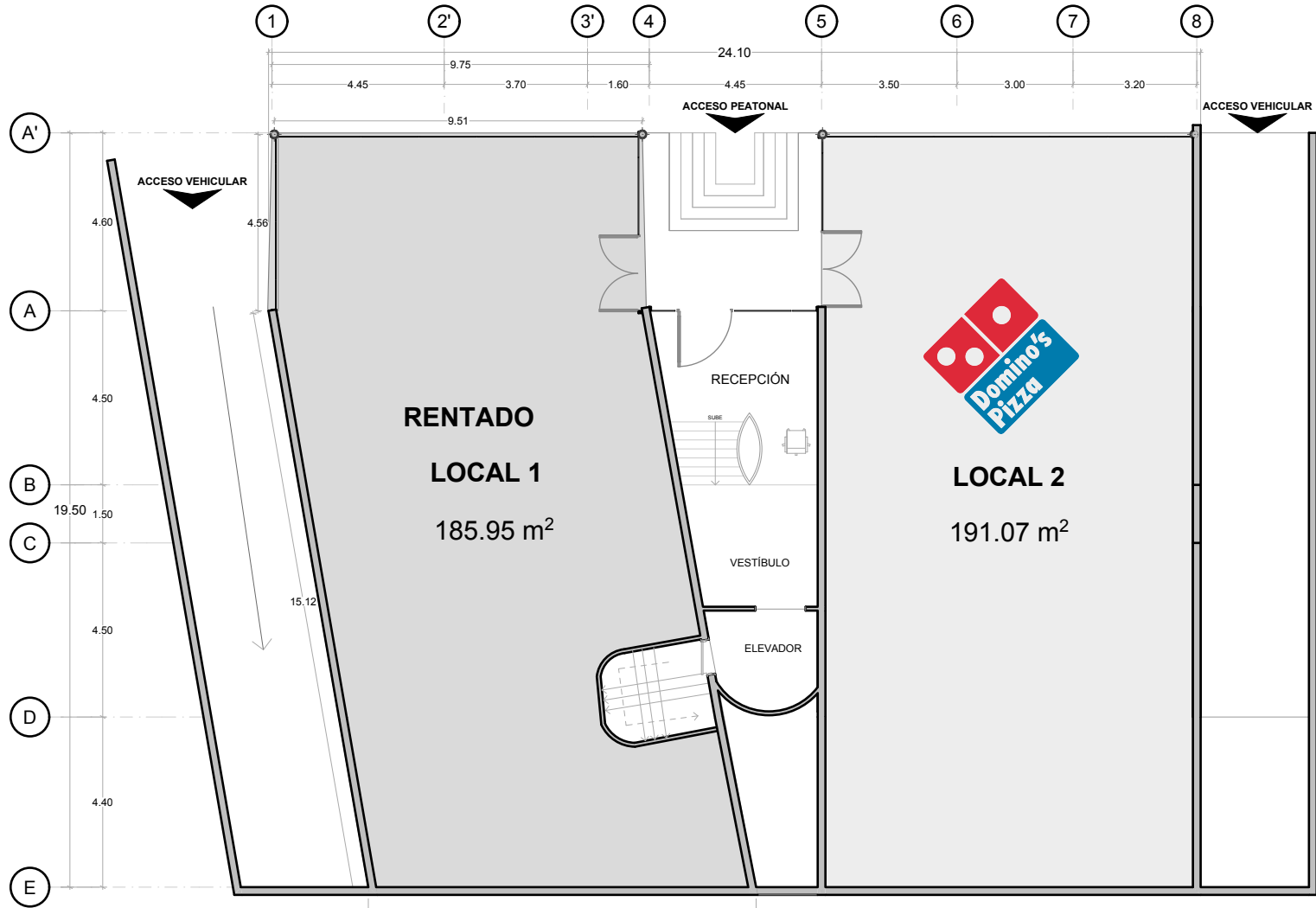
EXIT  
→

NO  
SMOKING

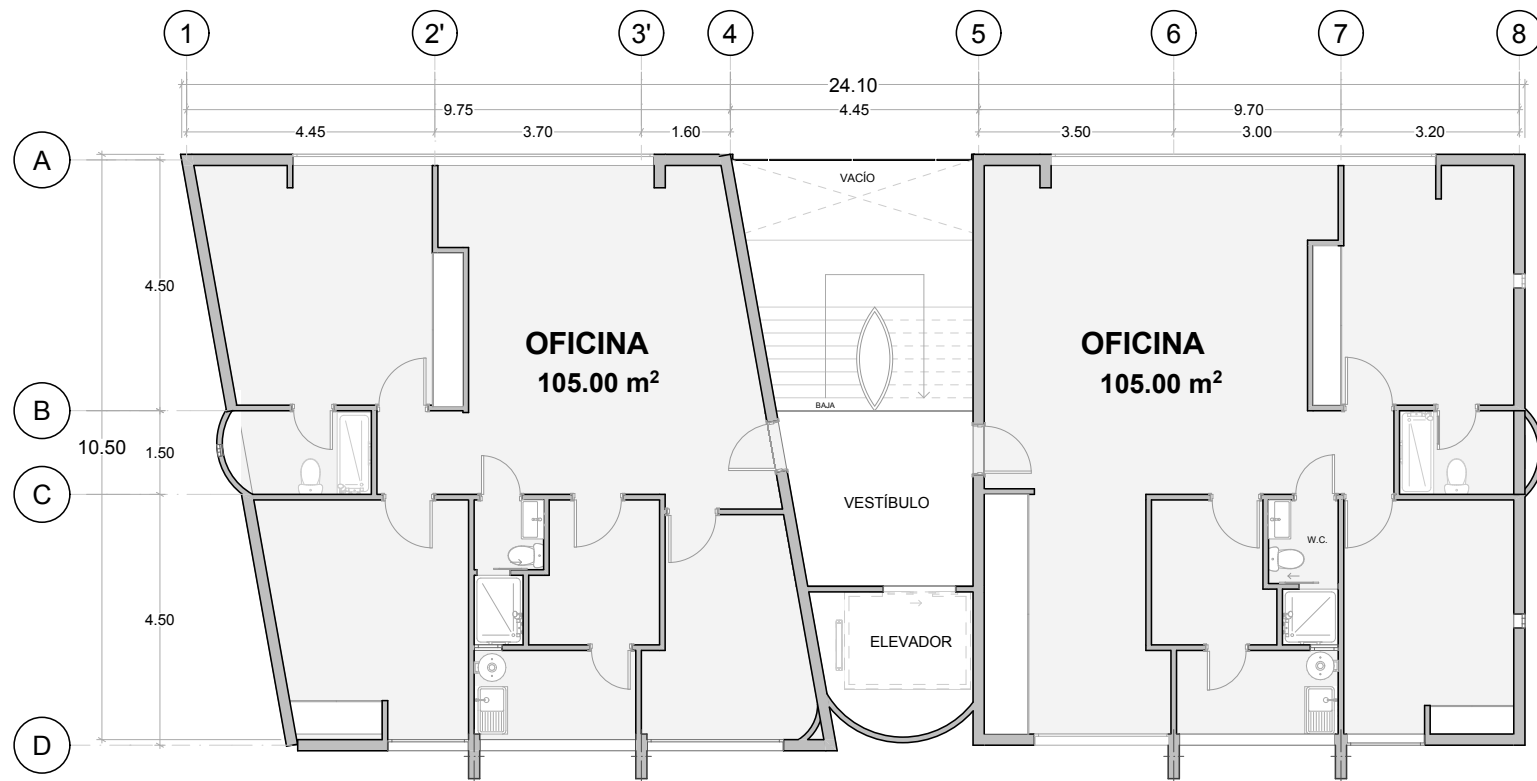
# Estacionamiento

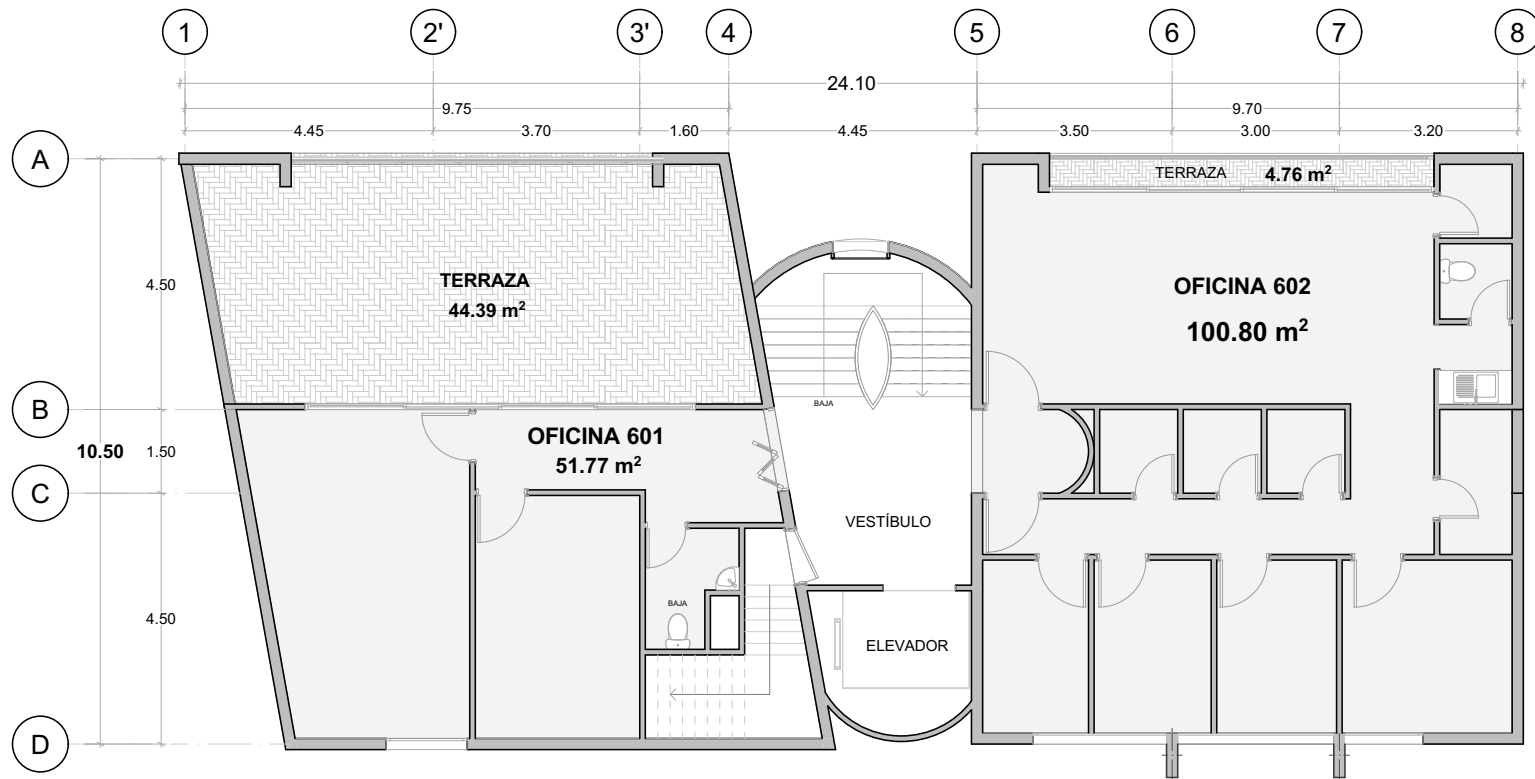


ERNEST J. PIPER

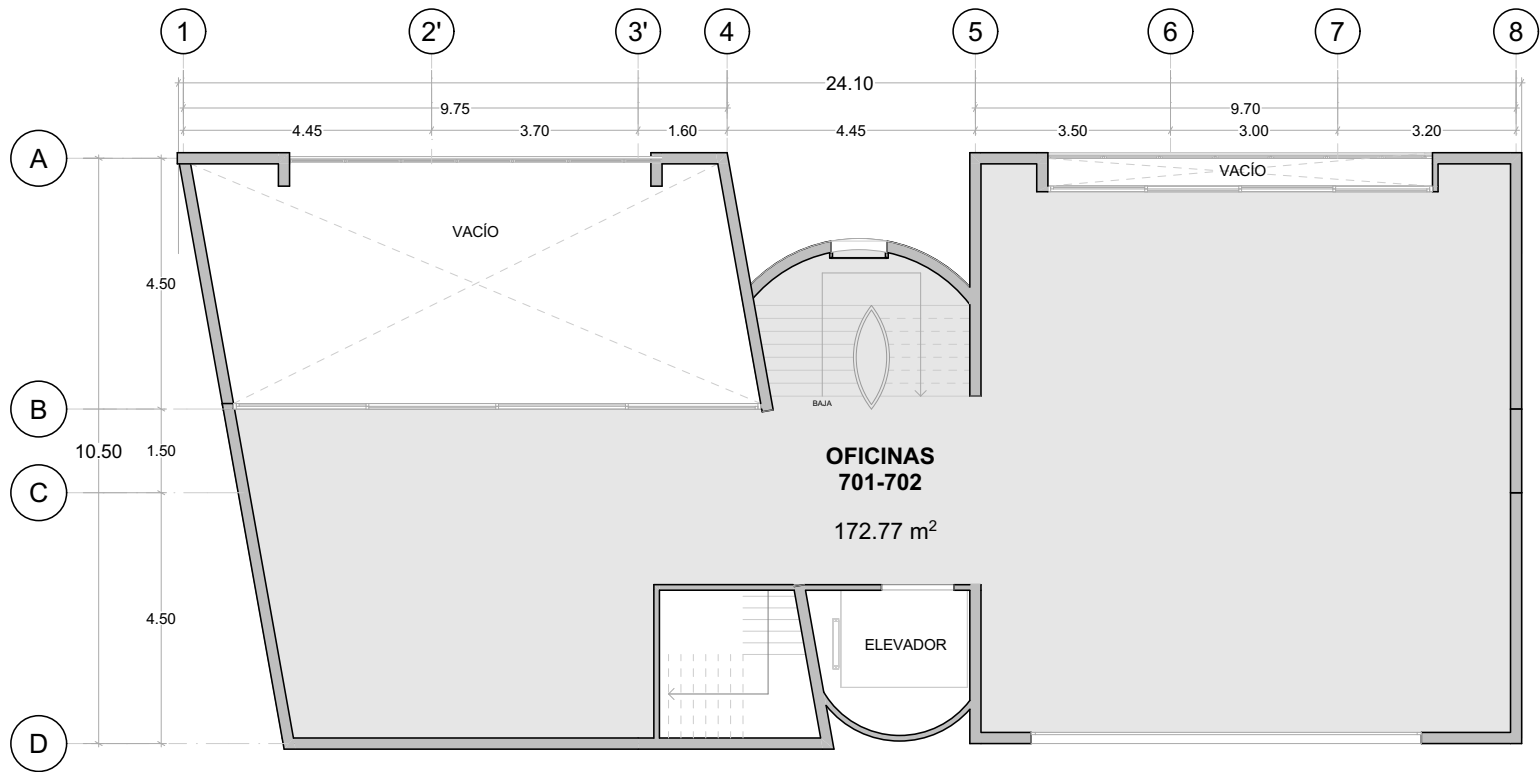


NIVELES 1-5









# Corte



**N7: 172.77 m<sup>2</sup>**

**N6: 229.26 m<sup>2</sup>**

**N5: 236.59 m<sup>2</sup>**

**N4: 236.59 m<sup>2</sup>**

**N3: 236.59 m<sup>2</sup>**

**N2: 236.59 m<sup>2</sup>**

**N1: 236.59 m<sup>2</sup>**

**PB: 405.14 m<sup>2</sup>**

**SÓTANO: 434.75 m<sup>2</sup>**



JYSA  
GRUPO INMOBILIARIO